

## Hot & Cold Drink

Honey Lemon Yuzu Tea 柠檬蜂蜜柚子茶 (Hot / Cold )	£ 2.70 / £3.00
Green Tea / Genmai-cha / Hoji-cha (Pot)	£ 2.30
Iced Fruit Tea - (Passion Fruit / Watermelon )	£ 3.20
Iced Fruit Tea - (Raspberry / Jasmine Lime )	£ 3.20
Home made Iced Mint Lemonade (refreshing)	£ 3.60
Calpico Soda 酸奶苏打水	£ 3.00
Japanese Ramune Marble Soda 波子汽水	£ 3.20
Coke / Diet Coke / Coke Zero / 7up	£ 2.50
San Pellegrino (Orange / Lemon)	£ 2.40
Still / Sparkling Bottled Water / Bottled juice	£ 2.00

## Japanese Beer & Ale 日本啤酒

Asahi Bottle 330 ml (ABV 5%)	£ 3.80
Kirin Lager Beer 330 ml (ABV 4.6 %)	£ 4.20
Hitachino Nest White Ale (ABV 5.5%)	£ 5.50

## Wine

Prosecco Baby 200ml bottle	£ 7.50
White wine or Red wine by glass (187ml bottle)	£ 4.80
IZAKAYA White wine OR Red wine bottle 750 ml	£ 16.00

## Japanese Gin / Whisky / Vodka

Gin (50ml) & Tonic (Roku ABV 43%)	£ 6.80
Hibiki Harmony Whisky (ABV 43%) 35ml	£ 8.00
Chita Whisky (35ml) (ABV 43%)	£ 7.00
Nikka All Malt Whisky (35ml) (ABV 40%)	£ 7.00
Japanese Rice Vodka (Kissui or Haku ABV 40%) 35ml	£ 7.00

Mochi Ice Cream (per pc) £ 1.90

*Coconut /  
Strawberry Cheesecake /  
Chocolate Ganache*

Dorayaki 铜锣烧 £ 2.80

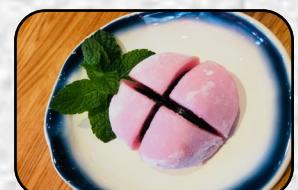
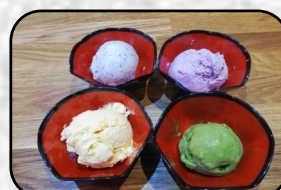
*Green Tea / Custard / Chocolate*

Ice Cream (per scoop) £ 1.80

*Green Tea  
Black Sesame  
Mango Sorbet (VG/GF)*

Daifuku 大福餅 (VG/GF) £ 2.80

*Adzuki red bean paste Daifuku*





## Japanese Saké / Umeshu Menu



- 1. House Saké - Warm / Chilled (ABV 13-15%) 120 ml £ 4.00**  
Sake is a healthy drink made from fermented rice. It is a clean-tasting, slightly sweet drink. The scent and taste of the sake could change dramatically depending on the temperature of the sake.



- 2. Choya Umeshu Plum wine (ABV 10%) 120 ml (chilled) £ 6.50**  
This plum wine has a sweet, fruity flavour without a strong alcoholic taste.

- 3. Kyoto Yuzu Saké Liqueur (ABV 12%) 120 ml (chilled) £ 6.50**  
A bright balance of refreshing citrus notes and roasted shochu aroma.



250ml £12.00      500ml bottles £ 23.00

- 4. Nigori Cloudy Saké (ABV 15%) 120 ml £ 6.00**  
This is roughly filtered and has rich and sweet flavors. **300 ml £ 13.50**



- 5. Shochu (ABV 20-25 %) 50 ml shot £ 4.50**  
A standard Japanese liquor which made with various ingredients including barley, sweet potatoes and it's a distilled liquor like whisky.

- 6. Hakushika Ginjo Nama - Chilled ABV 13.5% 180 ml £**

**7. 7.80**

Fresh, crisp flavour, best served lighty chilled or on ice

**Food Pairing :** pairs well with light Japanese dishes such as salmon sashimi.



- 7. Hakushika Ginjo Nama - Chilled ABV 13.5% 300 ml £ 12.50**  
Fresh, crisp flavour, best served lighty chilled or on ice.

- 8. Piano or Mio Sparkling Saké - Chilled ABV 5% 300 ml £ 14.00**  
Japanese style rice champagne, naturally sweetened from the rice fermentation process.



- 9. Nakata Kishu Plum wine - Chilled ABV 10% 300 ml £ 13.50**  
Fragrant, fruity flavour, made using the best quality plums from the Wakayama Region.

- 10. Homare Junmai Yuzu Aladdin ABV 10% 300 ml £ 14.50**  
Sweet and citrusy junmai saké blend with yuzu. Easy and uncomplicated.

- 11. Kizakura Junmai Daiginjo "S" ABV 16% 180 ml £ 12.50**  
A junmai 'daiginjo' saké with floral aromas produced using 100% Nishiki rice and famous Fushimi water.



**Food Pairing:** pairs well with sashimi and appetisers

- 12. Shochikubai Premium Junmai Sake ABV 15% 300 ml £ 14.50**  
This junmai sake is highly polished to 60% for an aromatic and clear taste. Enjoy at room temperature or slightly warmed..



**Food Pairing:** pairs well with sashimi, fish or chicken dishes.